

JL HAGER

An American Brand

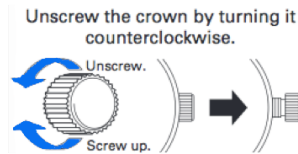


INTERCEPTOR
Owner's Operating Manual

INTERCEPTOR OPERATING INSTRUCTIONS



PLEASE BE ADVISED: engaging the date function when dial hands are between 8pm - 2am can cause serious damage to the calendar gears of the internal movement as the watch gearing will already be aligning itself to change the date. It is therefore vital to avoid adjusting the calendar or moving the time backwards during this period. Such damage is not covered under warranty. You must advance the time past midnight before you can set the date again.



After an extended period of non-use, the movement must be set in motion by winding the crown clockwise in its normal position approximately 40 times.

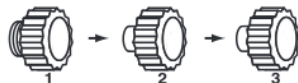
Flush- The crown is fully screwed-down. The watch is completely sealed and the movement protected.



(1st Position) For Manual Winding- Unscrew the crown counterclockwise until it completely disengages from the threads. Once there, begin to wind the crown clockwise about 25-30 times away from you, do not go back and forth with the crown. This is only required if you have not worn the watch for 1-2 days.



(2nd Position) Setting the Date- Unscrew the crown counterclockwise until it completely disengages from the threads (the winding position). With your thumb and forefinger slightly pull on the crown to reach the 2nd extended position. To set the date, wind the crown upwards (towards 12 o'clock) until you reach the appropriate date. When completed, lightly push and screw the crown tightly back into place.



(3rd Position) Setting the Time- Unscrew the crown counterclockwise until it pops out from the side (the winding position). Extend the crown past the 2nd position, which is fully extended from the side. To set the time, wind the crown clockwise or counterclockwise until you reach the appropriate time. When completed, lightly push the crown back into position 1 and gently screw the crown in clockwise direction, then tighten it again until you feel some resistance. **Do not force! You must always ensure the crown is fully tightened before any use in water.**