



HAGER

An American Brand



U-2 CHRONOGRAPH
Owner's Operating Manual

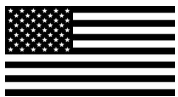
INTRODUCTION

Time is all we have. Live Fearlessly...

Congratulations on the purchase of your Hager watch. You have made a good investment that will serve you reliably for many years to come.

Just as in nature, form follows function in watch design, but naturally, a watch is also about appearance – and style is something the Hager Professional Series has plenty of. A watch isn't a status symbol anymore—it's style symbol. A modern watch, like a modern wardrobe, is one that combines the best of the old and the new in unexpected, highly individualized ways. It's about taste not tradition. Tradition is a great inspiration. As long as we keep reinventing it. While its clear that we've looked to the past to create the professional series, it is clearly a modern approach that represents a truly legitimate and interesting alternatives for aficionados looking for something other than the ubiquitous. What is extraordinary about the Professional Series is that it's one of the few brands that completely transcends its price category, regardless of demographic and age.

Congratulations on your purchase of the Hager U-2. Your U-2 is equipped with the Seiko VK64 meca-quartz 60-minute chronograph with tachymeter scale and 24 hours indicator sub-dial. What is a “meca-quartz chronograph? Meca-quartz is a hybrid design: in a meca-quartz chronograph, the timekeeping functions are controlled by a battery-powered quartz movement, while the stopwatch functions of the chronograph are recorded by a mechanical module that is also powered by the battery. Meca-quartz builds on the strengths of these two types of movements: the accuracy of quartz with the crisp feel and performance of a mechanical chronograph. Compared to a conventional fully-mechanical chronograph, a watch with a meca-quartz movement can be slimmer, more durable, and more reliable, cheaper to maintain and faster to service. Meca-quartz movements have been used for four decades in the most rugged and reliable chronograph as well as some in premier watch brands.



U-2 CHRONOGRAPH

FLYING IN STYLE



CASE

Diameter
41 mm

Material
316L stainless steel
Polished beveled edges with satin finish

Bezel
Fixed bezel

Waterproofness
Fully threaded crown and caseback offer 200 meters (660 feet) of water resistance

MOVEMENT

Functions

Quick correction of day and date, hours, minutes and Tachymeter hand that doubles as a second hand, date display at 6 o'clock. Chronograph: 60-min timer at 9 o'clock, 24-hour counter at 6 o'clock. Tachymeter scale on the bezel.

CRYSTAL

Domed scratch-resistant sapphire crystal with anti-reflective treatment

DIAL

Matte Black dial with faceted hour markers, Superluminova C3 baton hour hands and tachymeter aircraft shaped hand

BRACELET

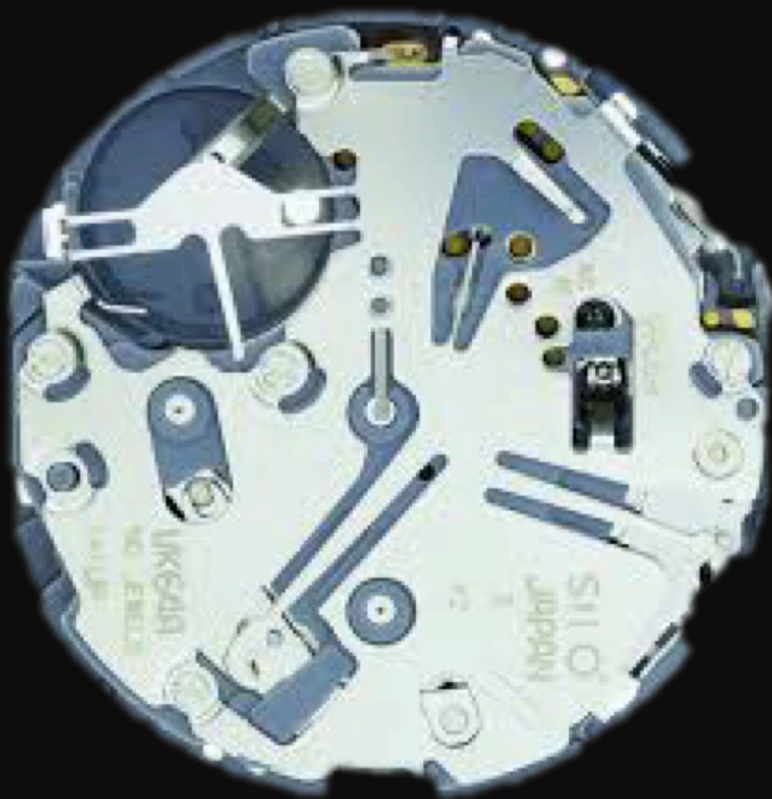
Stainless steel with brushed links, two-button deployment clasp and slide lock extension.



U-2 Chronograph

LUMINESCENCE

The dome crystal with black dial displays generous baton hour markers for perfect visibility in dark environments. Fully charged in natural light the green C3 Superluminova is highly legible in the dark



MOVEMENT

SEIKO VK-64

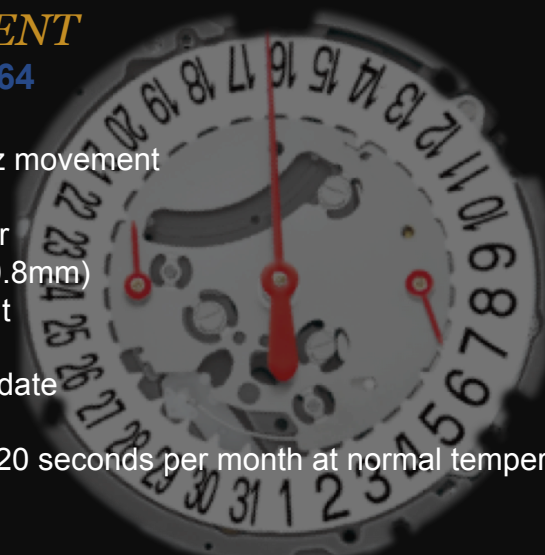
Hybrid Quartz movement

Total diameter
13.5 ligne (30.8mm)
5.1 mm height

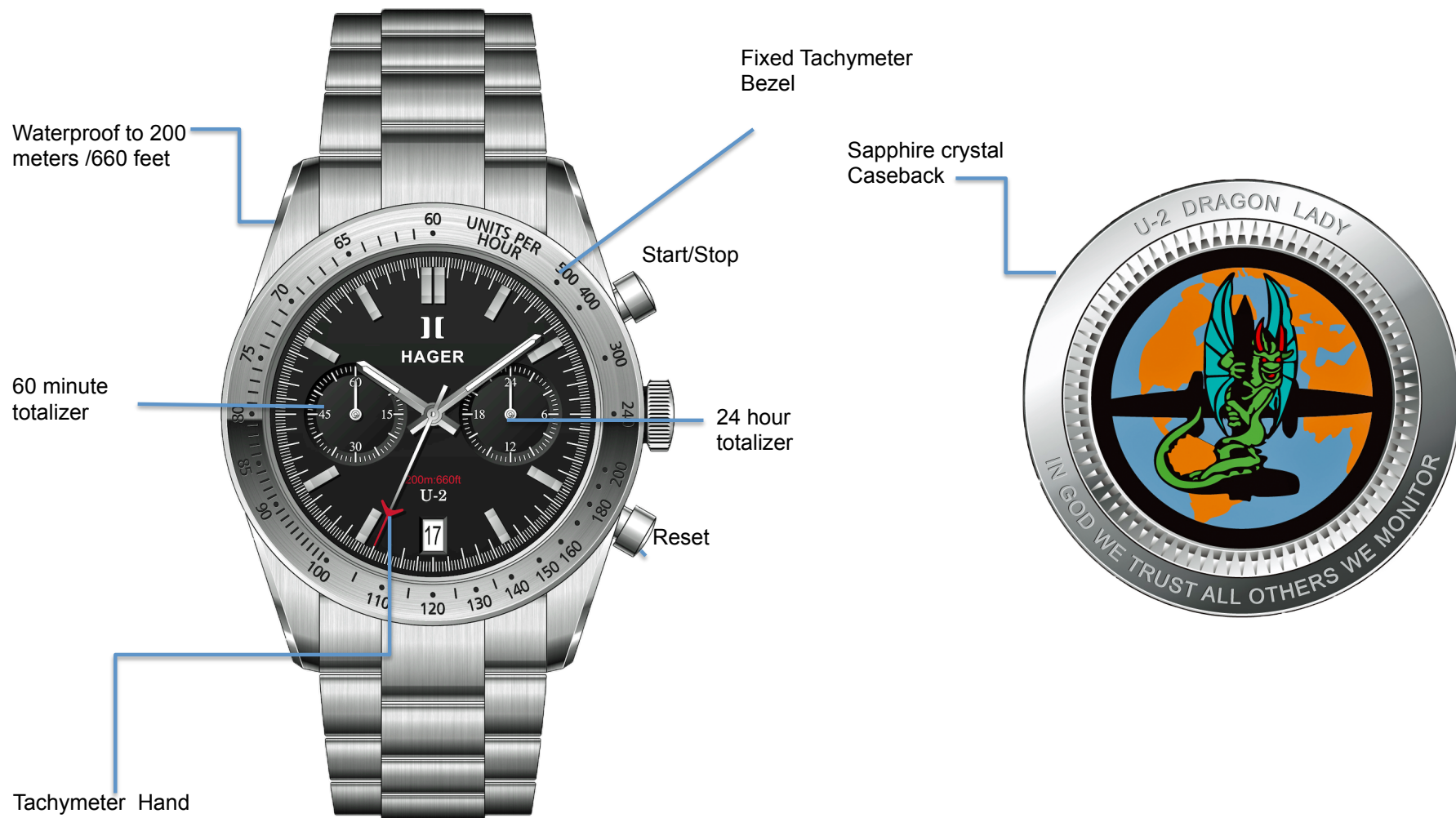
3 hands with date

Accuracy: ± 20 seconds per month at normal temperature range

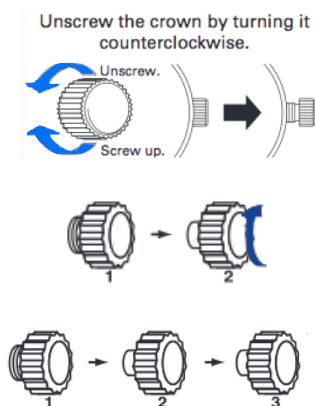
Power reserve: Battery (SR936SW) life approximately 3 years
Frequency of quartz oscillator 32.768Hz
Antimagnetism ≥ 1600 A / m (direct current magnetic field)



U-2 CHRONOGRAPH DISPLAY AND CONTROLS



U-2 OPERATING INSTRUCTIONS



Flush- The crown is fully screwed-down. The watch is completely sealed and the movement protected. This is position zero.

(1st Position) For Setting the Date position. This is position one. Gently unscrew the crown counter clockwise and gently pull out to one click.

(2nd Position) For Setting the time position. Gently pull out the crown to the second position. When completed, lightly push the crown back into position zero and gently screw the crown in clockwise direction, then tighten it again until you feel some resistance. **Do not force! You must always ensure the crown is fully tightened before any use in water.**

11. Setting the time:

- 1.1. Pull out the crown to the second click position.*
- 1.2. Turn the crown to set the hour and minute hand.
- 1.3. Check that AM / PM is set correctly by looking at the 24-hour sub-dial in the 3 o'clock position.
- 1.4. Push in the crown to the normal position.

•If the crown is pulled to the second position while the chronograph is started, the chronograph hands will continue to move. This is not a malfunction.

2. Setting the date (for models with date windows):

- 2.1. Pull out the crown to the first click position.
- 2.2. Turn the crown clockwise to set the date.

* **Do not change the date when the hands are set between 9 PM and 3 AM, because the day may not change properly. If it is necessary to set the date during that time, first change the hands to any time outside of that range; then set the date and then reset the correct time. (Use the 24 hours sub-dial located at 3 o'clock to help you when setting the date)**

- 2.3. Push in the crown to the normal position.

U-2 OPERATING INSTRUCTIONS



3. Using the chronograph:

Your U2 chronograph features a stopwatch that can measure up to 60 minutes and 24 hours.

3.1. **To start the chronograph:** press the upper pusher. The chronograph hands will begin to move.

3.2. **To stop the chronograph:** press the upper pusher again. The chronograph hands will stop and indicate the elapsed time. (Read the elapsed seconds on the large central hand and minutes on the sub-dial in the 9 o'clock position. The sub-dial at the 3 o'clock positions measure hours.

3.3. **To reset the chronograph:** press button the lower pusher to reset the chronograph. All the chronograph hands will be reset to "0" position.

4. Using the tachymeter scale:

The tachymeter scale can be used to compute a speed based on travel time. The tachymeter can also be used or measure distance based on speed.

To use the tachymeter for measuring speed: start the chronograph at the beginning of a 1-kilometer or 1-mile distance. At the end of the distance, the point on the scale next to the second hand indicates your speed.

To measure distance: while traveling at a constant speed, the tachymeter can also be used to measure distance. Start the chronograph at the beginning of the length to be measured. When the second-hand reaches the point on the tachymeter scale where the speed indicated equals the speed of the vehicle, one unit of distance (miles if speed is miles per hour, kilometers if kilometers per hour, etc.) has been covered.

For example, if you travel at a constant 80 mph (or at 80 km/h), then the distance traveled while the second-hand sweeps to "80" (45 seconds) will be exactly 1 mile at 80 mph (or 1 kilometer at 80 km/h).

Water resistance

Your chronograph has been tested for water resistance. It is safe for wear in a swimming pool, but probably not for scuba or ocean diving. The crown must be pushed in completely to ensure that the watch is water resistant.

Accuracy and battery replacement

The accuracy of the movement is 20 seconds a month. With normal use, the battery in your U2 should last about two years. When the watch begins to run slow, it indicates that the battery should be changed. Use a ref. SR936SW or 394 battery. The life of the battery can be shortened by extreme heat or cold. Note: some collectors like the chronograph to run full-time so they can observe the large central hand running constantly. Operating the chronograph full-time will not damage the watch, but will may somewhat reduce the battery life.

How to reset the movement:

4.1. Pull out the crown to the second click position.

4.2. Press the lower pusher for two seconds and release the pusher.

4.3. Push the crown back to the normal position.

4.4. The small second hand will move at a two-second interval for 10 seconds as a demonstration.*

* If the crown is moved during these 10 seconds, the two-second interval movement will not be activated.



© **Hager** Watches
36 South Potomac Street Suite 204
Hagerstown, MD 21740

HAGERWATCHES.COM
info@hagerwatches.com

*HAGER reserves the right to modify the models illustrated in
this catalogue at any time.*